

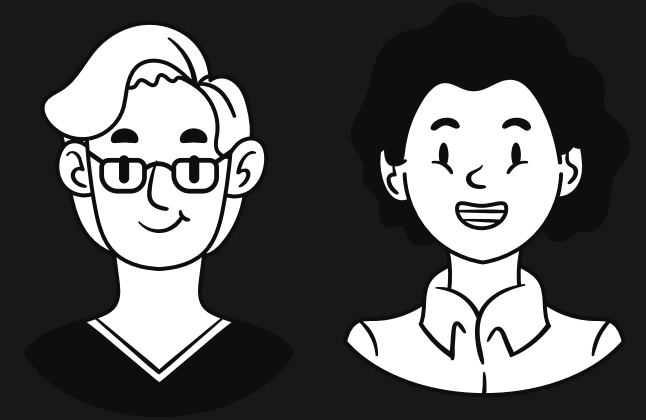
# 3

# GUIDE FOR PEOPLE LEADERS

IN THE ERA OF COVID-19

WAYS TO **LEAD**  
THE CONVERSATION

YOUR **F.I.R.S.T.** LEARNING & DEVELOPMENT PARTNER  
[WWW.INFLUENCE-SOLUTIONS.COM](http://WWW.INFLUENCE-SOLUTIONS.COM)  
HOLDING YOU **STEADY** IN A CHANGING WORLD



NAVIGATING ANY CRISIS  
REQUIRES A HIGHER LEVEL  
OF **LEADERSHIP**

THIS IS THE TIME FOR PEOPLE LEADERS  
TO **PROTECT**, **REASSURE** & **INSPIRE**

HOW ARE WE  
LEVERAGING  
THIS OPPORTUNITY TO  
**ENGAGE, EDUCATE AND**  
**EMPOWER** OUR PEOPLE?

UNDER PRESSURE,  
WE DON'T RISE TO THE OCCASION,  
WE SINK TO THE LEVEL OF OUR  
TRAINING.

PUT YOUR PEOPLE **F.I.R.S.T.**<sup>™</sup>

EMPOWER THEM TO BE

**F**UTURE-READY.  
**I**NNOVATIVE.  
**R**ELEVANT.  
**S**TRATEGIC.  
**T**RUSTED.



# HOW ARE WE NURTURING TRUST?

IN CRISIS, FEAR & ANXIETY LEADS TO  
LOW MORALE & DISENGAGED  
EMPLOYEES.

IN ALL COMMUNICATION, CONSIDER  
"HOW WILL THIS MAKE THE PERSON  
**FEEL?**"

TRUST IS NURTURED WHEN PEOPLE  
FEEL **VALUED** AND  
APPRECIATED.



**DURING  
CRISIS,  
LEARNING &  
DEVELOPMENT  
IS VITAL TO  
ENGAGE &  
EMPOWER  
YOUR PEOPLE.**

# BE COVID-19 READY



**KEEP CALM  
& DON'T BE SWAYED BY  
RUMOURS**

**PRACTICE SOCIAL DISTANCING  
MAINTAIN ONE METRE  
SPACING  
BETWEEN SEATS**



**PREPARE  
HAND SANITIZERS  
FOR WORKSHOPS**



**TAKE TEMPERATURES AND  
MAINTAIN A LOG  
AT THE START OF SESSIONS**



**IMPLEMENT  
HEALTH & TRAVEL  
DECLARATIONS FOR  
WORKSHOPS**

**SMALLER GROUP  
TRAINING AS PER  
MINISTRY OF HEALTH  
ADVISORY**



**PRACTICE SOCIAL DISTANCING  
ARRANGE FOR BENTO BOXES  
INSTEAD OF  
BUFFET-STYLE MEALS**

**INCLUDE VIRTUAL LOG-IN  
OPTION FOR WORKSHOPS TO  
FACILITATE SPLIT-TEAM  
WORKING**



**USE ONLINE "LIVE"  
WEBINARS THAT ENGAGE WITH  
DISCUSSIONS  
& BREAKOUT ROOMS**



**CONDUCT COACHING  
SESSIONS VIRTUALLY**



**EVERY CRISIS PRESENTS AN OPPORTUNITY.**

**CHALLENGES IGNITE OUR  
GREATEST CREATIVITY & THOUGHT LEADERSHIP,  
AS WE ARE PROPELLED TO MOVE BEYOND THE STATUS QUO.**

**HOLDING YOU STEADY IN A CHANGING WORLD**

**YOUR F.I.R.S.T. LEARNING & DEVELOPMENT PARTNER  
THE INFLUENCE SOLUTIONS TEAM**



**[WWW.INFLUENCE-SOLUTIONS.COM](http://WWW.INFLUENCE-SOLUTIONS.COM)**